



Let your light shine!

# Year 6 Autumn Term 1 on a page

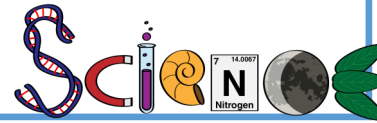


## Maths - Place Value

We will start off the year by identifying, writing and partitioning numbers up to 10,000,000. We will then look at rounding and negative numbers before moving on to addition, subtraction, multiplication and division later in the term.

## Science - Living things and their habitats

We will be classifying plants, animals and microorganisms, including bacteria, viruses and fungi. We will then research and explore the works of Carl Linnaeus and his system of classifying organisms.



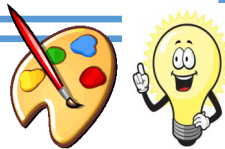
## English - The Place Value of Punctuation and Grammar

We will be recapping and revising key grammar and punctuation objectives required for curriculum including nouns, verbs and subjects. We will then be using these skills to write a non-chronological report about Famous Outlaws.



## Art - Make my voice heard

**(Drawing)** This unit focuses on developing skills in using different art styles, exploring effects with tools, understanding and applying chiaroscuro, and creating symbolic and expressive drawings.



## Computing - Online Safety

We will be reviewing the meaning of a 'digital footprint' and identify positive and negative influences of technology on our health and wellbeing.



## RE - What does it mean if God is loving and Holy?

We will be exploring the connections between biblical texts and Christian ideas of God. We will discuss how Christians put their beliefs into practice in worship and weigh up how biblical ideas and teachings about God as holy and loving might make a difference in the world today.



## Geography- Why does Population change?

This topic Investigates why certain parts of the world are more populated than others; exploring birth and death rates & discussing social, economic and environmental push and pull factors in Britain and its impacts.



## Spanish - Exploring a Spanish Town

We will be learning the key vocabulary to describe a town. We will then use these skills to compare two towns and write sentences about them.

## Music - Journeys

We will be looking at expressive singing, including harmonies and song cycles.



## PSHE - Being me in my world

Children will discuss the year ahead and look into what it means to be a 'Global Citizen'.



## Important Notes

PE Day - Wednesday

Termly Value - Friendship

Homework - Set on a Friday and due in the following Wednesday. **Homework will be set from Friday 20th September.**

