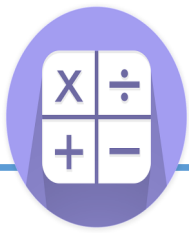




Let your light shine!



Maths

In this term we will consolidate our learning on addition and subtraction, and then move on to multiplication and division. We will look at what these are, and solve calculations using a number of methods. We will use arrays and the column method.

Art—Developing drawing skills

Children will use their observation skills to describe specific shapes, textures or patterns in objects. We will also learn the four main shading techniques.



Geography— Why do people live near volcanoes?

Our learning journey will allow children to build up knowledge in order to answer this key question. We will discover where most volcanoes are located, how they are formed and what benefits they may bring, as well as the dangers they pose to humans.



Music— Creating composition

In this unit we will visualise how music can make us feel & create actions to fit with the music.



Year 3 Term 2 on a page 2025-26

Science — Animals including Humans.

We will be learning about the bones and muscles in our bodies, and how our skeleton compares to that of some animals. We will learn the importance of eating healthily too.



Computing (Unit 3.3 spreadsheets)

In computing we will be investigating spreadsheets, cells addresses and using basic formula to enter commands.



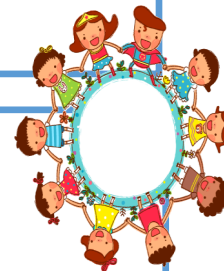
PE

This half term we will be focussing on Gymnastics and fitness. We will develop our balancing, rolling & jumping, and using these skills individually and in combination to create a routine.



PSHE— Celebrating differences.

In this unit we will look at the importance of family, and how other families may be different to our own and to learn to respect our differences.



English

In English we will be reading 'Escape from Pompeii' and using this text to write our own version, and to also focus on using direct speech in our writing.



We will also be continuing our Active spelling and handwriting practice each week.

RE— Why communities matter.

This term our focus is on pilgrimage, and what this may mean to individuals and communities—the places and journeys people may consider to be special.



Important Notes

PE Day : Thursday & Friday

Termly Value: TBC

Homework: Set on a Friday. To be completed and handed in by the following Wednesday via Purple Mash.

