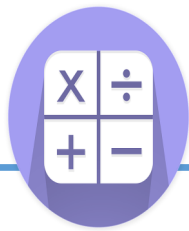




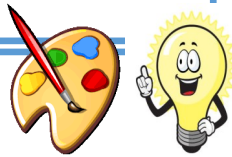
Let your light shine!



### Maths

In this term we will further investigate multiplication and division, by looking at formal methods for solving each. Division will look at division with remainders too. We will also look at the link between division and multiplication. Times tables practice remains key.

### DT — Cooking & nutrition— eating seasonally.



Children will learn about climate and how this can affect the food that grows there. We will also be making seasonal dishes.

### History — Why did the Romans invade & settle in Britain?



Children will be able to explain the meaning of the words 'empire', 'invasion' and 'settlement', analyse the different reasons for the Roman invasion of Britain & explain how the Celts responded to the Roman invasion.

### Music— Ballads

In this unit we will use musical vocabulary to explain the stylistic features of a ballad, and perform our own.



# Year 3 Term 3 on a page 2025-26

### Science — Forces & Magnets.

The children will explore simple pushes and pulls as an introduction to contact forces. We will also investigate different magnets and how they can pull (attract) and push (repel).



### Computing

In computing we will be looking at online safety and what information and data is, and how we need to keep sensitive data private.



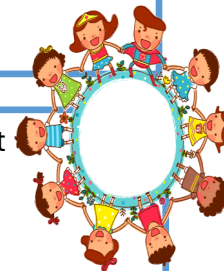
### PE— Dance



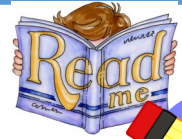
### & netball.

This half term we will be focussing on selecting and linking actions and dynamics to create a dance sequence. We will be learning the basic skills and rules of netball, using these to play attacking and invasion games.

**PSHE— Dreams & Goals.** In this unit we will learn about trying to stay motivated when we face challenges, and have a positive attitude and outlook for ourselves and others.



### English



In English we will be looking in detail at conjunctions and how we can use these in our writing. We will also be creating a non-chronological report based on our history learning, all about the Roman invasion of Britain and the revolt led by Boudicca.

**RE—** Which religious and worldview communities can we find in our neighbourhood?

In this unit we will be looking at what it means to be a member of a community, and which religions are present in our community.



### Important Notes

**PE Day :** Thursday & Friday

**Termly Value:** Joy

**Homework:** Set on a Friday. To be completed and handed in by the following Wednesday via Purple Mash.

